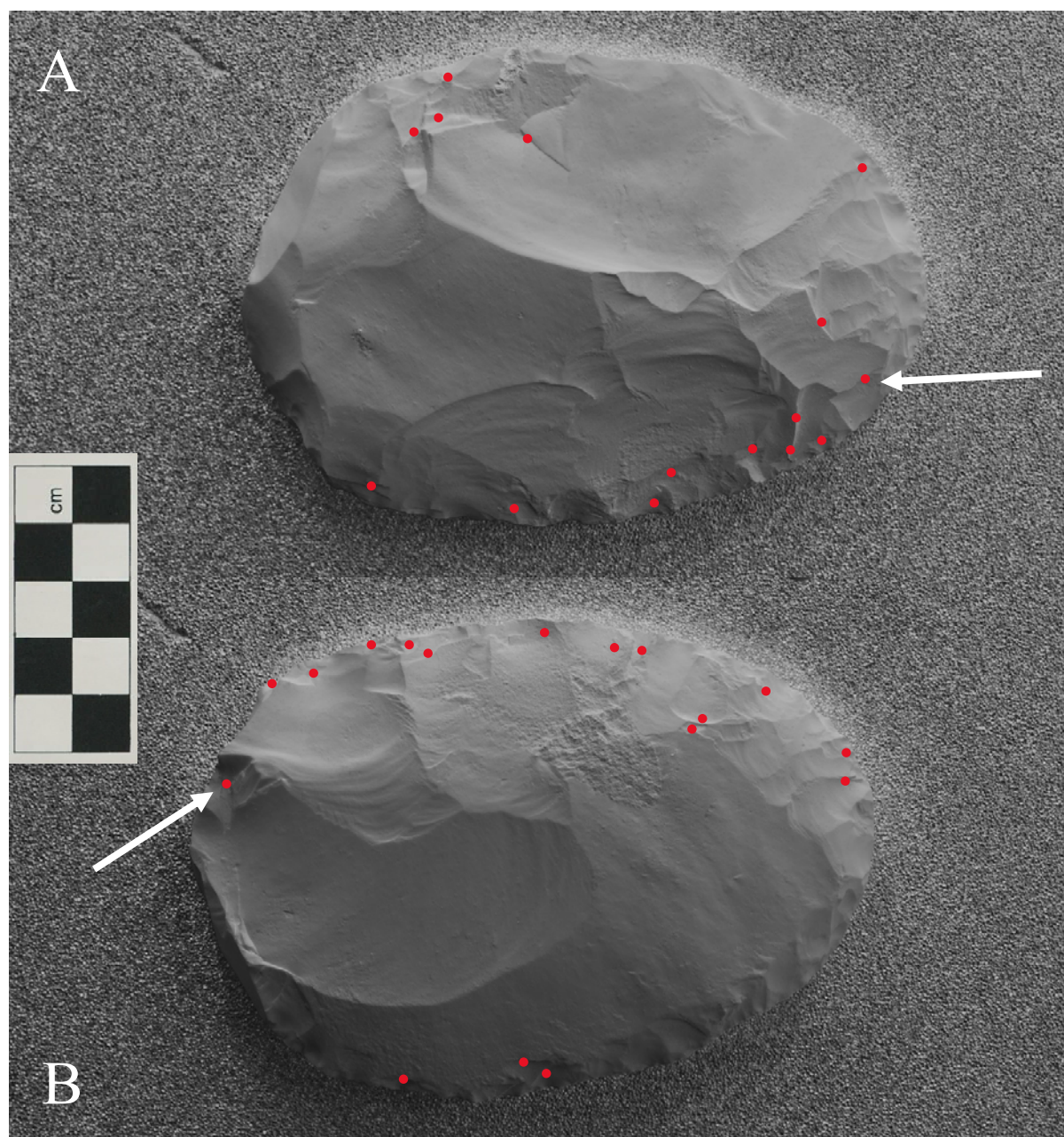
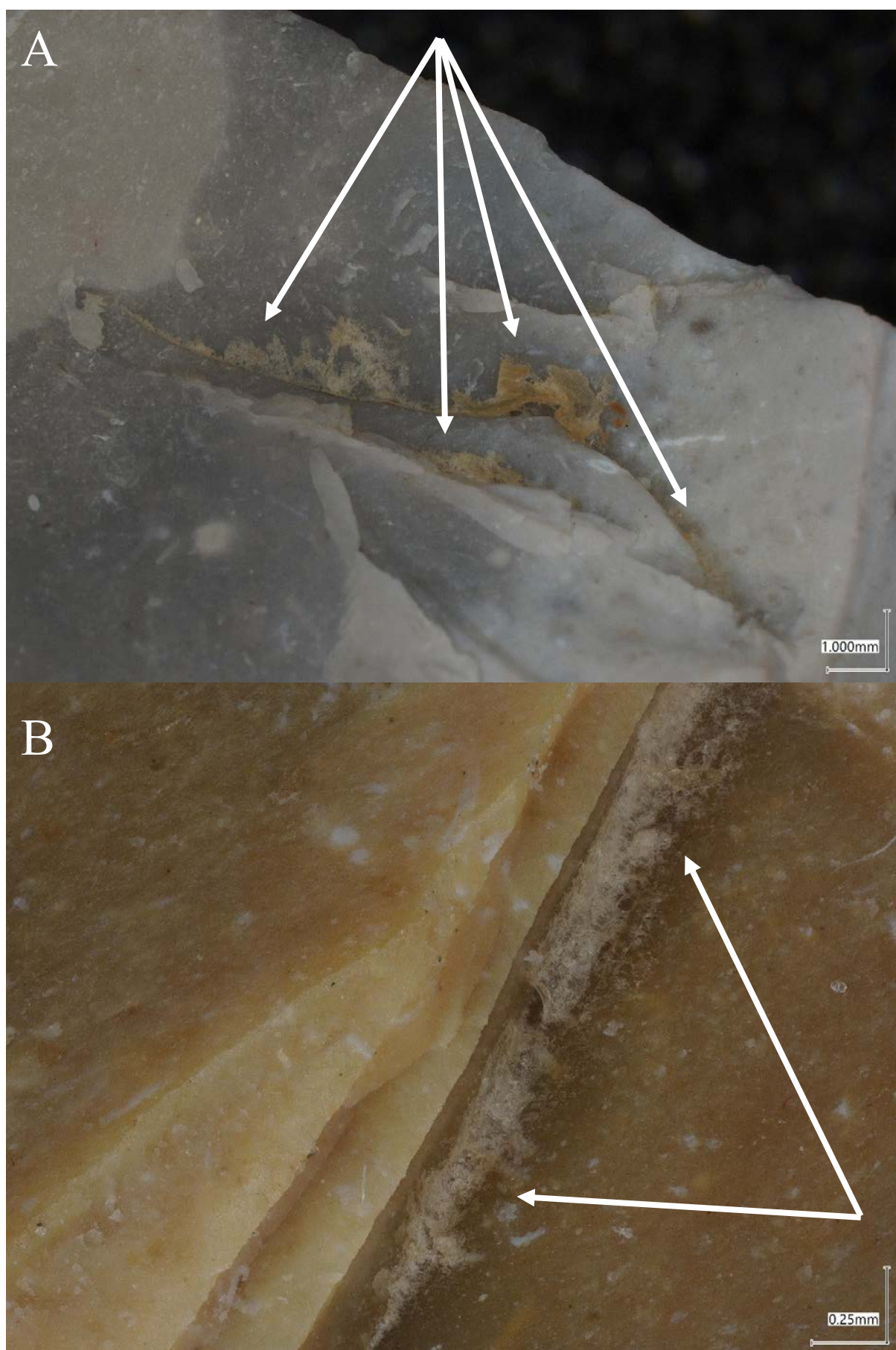


Biface #04 (soapwort)

As illustrated in *Supplementary Figures 4.0* and *4.1*, at least 19 sites on biface #04 have retained biological matter after the decontamination procedure. This supports the inference that the *soapwort* treatment cannot adequately decontaminate a bifacial tool which has been utilised for butchery tasks.



Supplementary Figure 4.0: The digital map of biface #04, showing face A (top) and face B (bottom). Red dots mark biological matter sites. Arrow points to the example image for either face. (Source: Whitehead).



Supplementary Figure 4.1: Photographic example of biological matter on either face of biface #04. Scale on the bottom right-hand corners. (Source: Whitehead).