

EXARC 2024 Prospects

Overview:

Developments and Updates

- Team and Vision
- New Website
- Discord Server

Familiar Faces

- EXARC Journal and Digest
- Podcast
- EXARC Conference

EU Project (RETOLD)

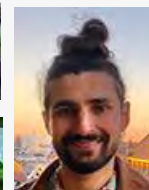
Vision and Goals

- Strengthen out network of resources
- Enable professional development
- Promote accessibility

2024 sees EXARC with a new director:
Dr Matilda Siebrecht

To fulfill EXARC's vision, we rely on our international team of volunteers in multiple projects, and we aim to expand this team to accommodate our goals in 2024!

1. Experimental archaeology
2. Archaeological Open-air Museums
3. Ancient Technology
4. Interpretation



MUSEUM PRACTICE

Did you know there are at least 500 archaeological open-air museums (AOAM) worldwide? EXARC revolves around such museums...

[Read more](#)

EXPERIMENTAL ARCHAEOLOGY

Experimental Archaeology takes all kinds of forms, from 'tough' science to a way of making your public experience the things and actions from the past...

[Read more](#)

ANCIENT & TRADITIONAL TECHNOLOGY

Ancient & Traditional Technology (A&TT) is the research & execution of ancient, historic or traditional techniques which we are aware of from archaeology...

[Read more](#)

INTERPRETATION & EDUCATION

Interpretation includes living history, story telling and museum education. Interpreters present and explain the meaning of the archaeological past...

[Read more](#)

Welcome to EXARC

[View](#) [Edit](#) [Outline](#) [Delete](#) [Revisions](#)

EXARC's mission is to make the archaeological past widely accessible. It does this through creating opportunities for researchers and practitioners to collaborate, exchange information, and share best practices in archaeological open-air museums, experimental archaeology research, educational and presentational tools and demonstrations of cultural heritage. EXARC's mission includes facilitating both research and education. Our goal is to bring people together and make them more professional.

EXARC has four legs: Ancient Technology, Experimental Archaeology, Interpretation / education and Museum Practice. EXARC has four target groups: Museums, Higher Education Centres, Organisations and Individuals (working in the fields connected to our legs).

EXARC connects people - is a bridge between open-air museums and science. By sharing the knowledge - together, with all different backgrounds, we are stronger. Together we can make an important contribution to society. EXARC is an open and inclusive network. The organisation is fluid and adaptable to what occurs.

EXARC is a vibrant, dynamic, growing international cultural heritage network with over 350 members in 40 countries. Members include over 100 museums (with an audience of about 5 million people annually), 200 freelance cultural heritage professionals working with those museums, 12 universities and 30 associations. Our individual members range from archaeology professors to professional craftspeople.

EXARC is affiliated to the International Council of Museums (ICOM) and is a member of the Network of European Museum Organisations (NEMO).

What we offer:

- Collegiality (own profession)
- Professionality (high-quality network)
- Easy access (low threshold and welcoming)
- Variety within the theme (mix of different ingredients: science, craft, interpretation)
- Reputation and status (to be taken seriously within the themes)
- International character (broaden horizons)
- Opportunities to professionalise (for example helping to publish)
- Know-how in our field (well informed of what is happening in the field, and can easily link people who need things / services / goods)
- Open Access (EXARC stands for sharing the knowledge widely and for free - by becoming member one supports our mission and ideas)
- Flexible working methods (can easily adapt to what is happening)

Convinced? Please become EXARC Member.

Members are authorised to cancel their memberships in observance of a notice period of at least thirteen weeks prior to the end of the association year (**EXARC Charter**), before October 1st.

Contact us if you wish to cancel your membership.

SEARCH THE WEBSITE

[Search](#)

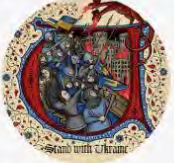
DONORS

Besides Members, EXARC also has Donors. Their role is described in the **EXARC Charter, Article Eight**.

[Donate](#)

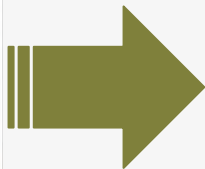
Thank you for your support!

EXARC-YEAR Centre: Support Ukraine Network (SUN)

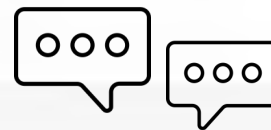


EXARC has teamed up with the YEAR Centre (York Experimental Archaeological Research, UK) and Ukraine based ancient craft expert and EXARC member Yarema Ivantsev - to create a Support Ukraine Network (SUN) which will provide mentorship and resources for open-air museums, experimental archaeologists, and ancient craft experts. Because of Russia's invasion of Ukraine...

[Read more](#)

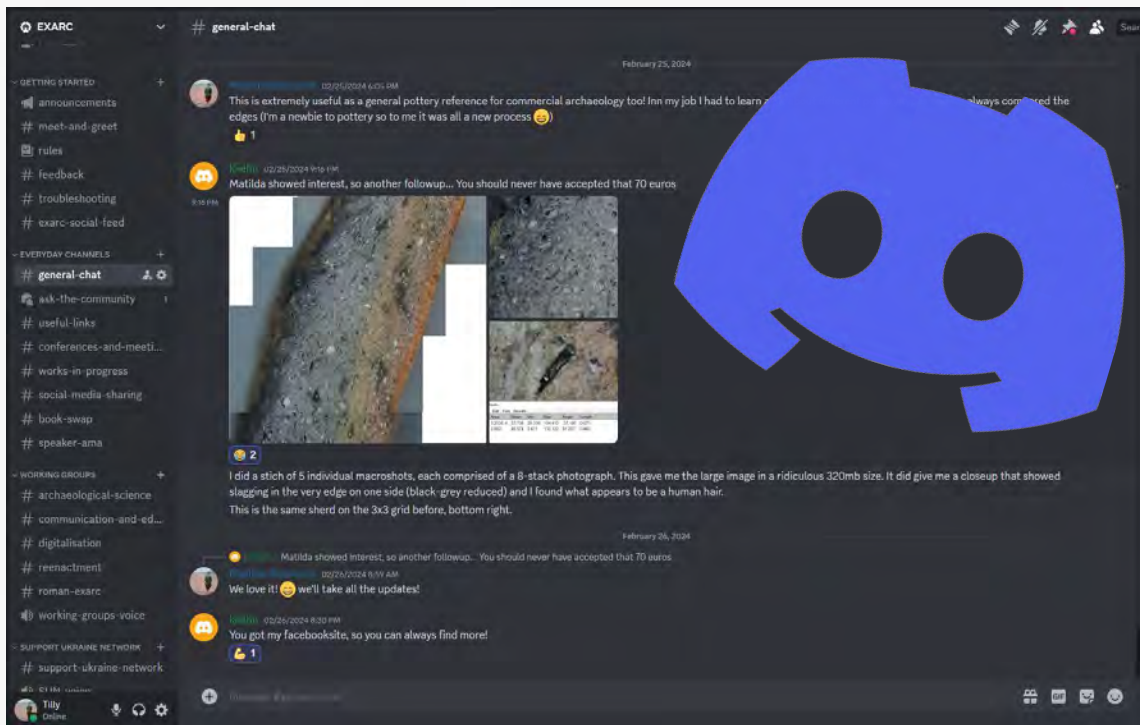


- Consolidated content
- Streamlined menus
- Links to external pages
- Increased user-friendliness



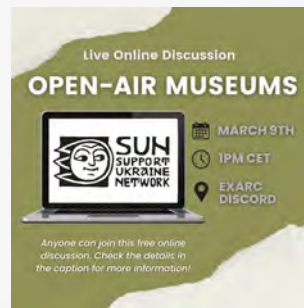
Renewal of the EXARC Community Discord Server

An online platform for interaction with fellow EXARC members



New EXARC Working Groups

- *Roman EXARC*
- *Archaeological Science*
- *Communication & Education*
- *Re-enactment*
- *Digitalisation*
- *Textiles*



Live Events

Providing a virtual space for collaboration and networking



#Finally Friday

- Monthly episodes
- Two expert guest speakers
- Range of topics
- Three hosts
 - Matilda Siebrecht
 - Phoebe Baker
 - Jess Shaw

EXARC Extracts

- Quarterly episodes
- Summary of recent journal issue
- One host (Matilda Siebrecht)

RECENT EPISODES



Magnifying the Past

Publishing Date: 2024-03-01

Guests: Matilda Siebrecht (DE) and Éva Halbrucker (BE)

So you've dug up an object... but how do you know what it was used for? Microwear and use-wear analysis is a growing sub-field within archaeology looking for microscopic traces on artefacts which might give us clues on how they were used in the past.

[Download Transcript as PDF](#)



The Meaning of Cleaning

Publishing Date: 2024-02-02

Guests: Sally Pointer (UK) and Sara Robb (UK)

Lather, rinse, and repeat – an insight into early chemistry. In this month's episode of #FinallyFriday we dive into the history of soap, debunking soap origin myths and breaking down the science of making soap. From sourcing specific wood ash to

[Download Transcript as PDF](#)



Mirrors and Windows 2023

Publishing Date: 2023-12-15

Guests: Roeland Paardekooper (DK) and Matilda Siebrecht (DE)

It's getting closer to the end of the year, which means that it's time for our next episode of Mirrors and Windows. This year, founding member and current director Roeland Paardekooper chats with Matilda Siebrecht, who will be taking over the role.

[Download Transcript as PDF](#)



Mastering Metals

Publishing Date: 2023-11-03

Guests: Fergus Millon (UK) and Giovanna Fregni (CY)

The use of metal has transformed almost every aspect of life, helping us to clothe ourselves, create cars, trains and planes, get to the bottom of the ocean and out into space. On this month's episode of Finally Friday, we take a look at how

[Download Transcript as PDF](#)

New Issue:
2024/01
featuring
12 articles
Open Access

Read now in:
JEXARC
JOURNAL



EXARC Journal and Digest

- 1st online issue released in Feb
- 3 more issues planned for 2024
- Physical digest at end of year

EXARC.net



LAND



RETOLD

DOCUMENTATION DIGITISATION SHARING

Co-funded by the
Creative Europe Programme
of the European Union



September 2024: **RETOLD** conference in Batavialand (NL) about Digitalisation

... Where **Archaeological Open-Air Museums** • **Experimental Archaeology** • **Ancient Technology** • **Interpretation** Meet ...

Exhibition banners for RETOLD partners about Crafts, Part 3

DOCUMENTING CRAFTS



STEINZEITPARK DITHMARSCHEN

FLINT KNAPPING

Production of a wide range of different tools and weapons in Stone Age Times.

WHY IS THIS CRAFT IMPORTANT?

The using of flint stone as an important and widespread material for different purposes lead to great number of today preserved and excavated artifacts. Not at least the incredible number of stone artifacts gave the whole period the name Stone Age.



In our museum some original flint tools are exhibited in the permanent exhibition.

MATERIALS, TOOLS AND TECHNIQUES

Flint is a sedimentary rock consisting of microscopic, nearly undetectable crystals of the mineral quartz (SiO₂). It can be formed and worked out with (harder) stone, with bone, antler and wood.



There are different methods to work with flint. Above, "opening" the stone using "hard percussion" by hitting it with another stone.



Above, retouching the flint blade with a small antler point. Right, preparing fine blades from a limestone core with an antler point and a hammer ("soft percussion").

PRODUCTS AND THEIR USE

Many tools are made of flint. The hunters and gatherers made blades, knives, obsidians, arrowheads, scrapers, and dills. They also made "compacted foods" using many very small flint pieces. The early farmers used it for daggers, axes and sickles. Right, some examples, like daggers, blades and a sickle, widely used in our educational work and programs of Abenteuer! (L&L).

Co-funded by the
Creative Europe Programme
of the European Union



RETOLD.EU

Co-funded by the
Creative Europe Programme
of the European Union



DOCUMENTING CRAFTS



Muzeul Astra **Consiliul Județean Sibiu**

WOODWORKING

Production of a wide range of different wooden household items.

WHY IS THIS CRAFT IMPORTANT?

The importance of this craft resides in the fact that the items produced and used day by day in the nowadays kitchen are a healthy and sustainable alternative to the different industrial materials. For the museum, this type of household items, made long time ago, are an important part of the collection, being part of all the households exhibited.



Wooden bowl, used to preserve or serve food, dating back to the first half of the 20th century, bought by the museum in 1976 from Olteana region the south of Romania.

MATERIALS, TOOLS AND TECHNIQUES

The saw material used to practice this craft is soft wood (yellow Spruce, linden tree, Tilia, aspen Robinia pseudacacia) that is used freshly cut. The finished products are left to dry properly and only after that, sold dried, not to crack at the beneficiary. The working techniques are splitting, carving, hollowing out and finishing procedures. The remains are used to light the fire.

The steps to make wooden bowl are:

- #1. Hollowing the made with the axe after the top is splitting into half.
- #2. Detail while finishing the inside with the bent blade carving chisel.
- #3. Detail while carving the outside of the object to give a shape.
- #4. Detail while finishing the outside.

PRODUCTS AND THEIR USE

Through this craft, the following household products are made: wooden bowls, wood trays, cutting boards, spoons. The products are mainly meant to be used day by day in the kitchen.



In order to produce the different household items, the tools used are: the axe, the Strandske, the bent blade carving chisel, the knife, the compass.

Co-funded by the
Creative Europe Programme
of the European Union



RETOLD.EU

Co-funded by the
Creative Europe Programme
of the European Union



DOCUMENTING CRAFTS



STIFTUNG STADTMUSEUM BERLIN

BULLET VESSELS

Convex shape pots, very popular in the Middle Ages, everyday pottery.

WHY IS THIS CRAFT IMPORTANT?

At Duppau, we found a lot of pots called "KugelföÙer" in German, literally "balled vessels" in English. We have been making and using such pots again already since the mid 1970s. That way, we learned a lot about these pots, and now we can show everybody how to make and use them! (Source: FöÙerwerkzeug-Museum/Duppau)



When still wet, you continue by smoothing and forming the pot with even pressure from bottom to top. Next step is shaping the rim. You need to turn it over and then pull it outwards. As decoration, we carve grooves all around the top part of the pot. The upper part of the vessel is then left to dry until it is leather-hard. The lower part must remain moist. You then enlarge the neck of the vessel by pressing the edge of a paddle against the inside wall. Now the pot must be rounded, especially the bottom. You can drive out the clay using your hands, a wooden spoon or even a pebble. Just apply a little force by pressing and tapping.

MATERIALS, TOOLS AND TECHNIQUES



You start with getting sandy clay.

- #1. When still wet, you continue by smoothing and forming the pot with even pressure from bottom to top. Next step is shaping the rim. You need to turn it over and then pull it outwards.
- #2. As decoration, we carve grooves all around the top part of the pot. The upper part of the vessel is then left to dry until it is leather-hard. The lower part must remain moist. You then enlarge the neck of the vessel by pressing the edge of a paddle against the inside wall.
- #3. Now the pot must be rounded, especially the bottom. You can drive out the clay using your hands, a wooden spoon or even a pebble. Just apply a little force by pressing and tapping.
- #4. In order to obtain the characteristic dark grey colour during firing, the kiln must be closed at the end of the firing process.

PRODUCTS AND THEIR USE

By far the most of these pots are used for cooking. Our houses have a fireplace or floor level. Such a round pot works perfectly if you place it in the rim of glowing embers and water.

Co-funded by the
Creative Europe Programme
of the European Union



RETOLD.EU

Co-funded by the
Creative Europe Programme
of the European Union



OPEN AIR MUSEUMS

Buildings

Documentation Records

Users

Home / Buildings / Building 1 / New Record / Site Overview

New Record



Negative Features

+ Add Mark

RETOLD
DOCUMENTATION DIGITISATION SHARINGCo-funded by the
Creative Europe Programme
of the European Union

RETOLD.EU

Developing the
APP for
documenting
buildings and
Crafts with
RETOLD Partners.

Creating a
**Whitebook /
Platform** with
examples.

FINANCES

2021-2025

EXPENDITURE	2021	2022	2023	2024	2025
Staff	€ 28.722	€ 21.635	€ 19.773	€ 35.050	€ 42.300
Staff RETOLD	€ 11.648	€ 11.052	€ 15.397	€ 19.157	
Conference and Seminars	€ 2.985	€ 75	€ 7.481		
Conference RETOLD				€ 2.450	
PR Products	€ 3.063	€ 3.344	€ 3.795	€ 3.772	€ 250
PR Website	€ 163	€ 174	€ 442	€ 350	€ 450
PR RETOLD	€ 403	€ 402	€ 298	€ 5.438	
Postage	€ 1.907	€ 1.979	€ 2.336		€ 425
Office costs	€ 4.458	€ 3.794	€ 4.065	€ 418	€ 800
Indirect Cost RETOLD	€ 855	€ 1.071	€ 1.317	€ 2.857	
Accountant	€ 1.858	€ 2.176	€ 2.412	€ 2.500	
Audit RETOLD	€ 160	€ 3.025	€ 1.071	€ 4.149	
Travels / external contacts	€ 445	€ 1.187	€ 4.421	€ 4.149	€ 4.000
Travels RETOLD	€ 0	€ 828	€ 2.044	€ 9.620	
Other	€ 267	€ 390	€ 466	€ 500	€ 500
Costs Bank	€ 636	€ 492	€ 803	€ 820	€ 820
TOTAL EXPENDITURE	€ 57.568	€ 51.625	€ 66.119	€ 91.230	€ 49.545

INCOME	2021	2022	2023	2024	2025
Donations	€ 90	€ 95	€ 590	€ 1.100	€ 1.100
Contributions	€ 34.510	€ 35.630	€ 36.555	€ 37.000	€ 37.500
Adverts	€ 600	€ 200	€ 250	€ 500	€ 0
Sales	€ 109	€ 219	€ 1.169	€ 300	€ 300
Conference and Seminars	€ 14.189	€ 1.500	€ 13.133	€ 0	€ 0
Income Bank	€ 649	€ 618	€ 878	€ 1.341	€ 1.000
RETOLD	€ 12.500	€ 12.500	€ 12.500	€ 14.208	€ 22.161
Other Grants	€ 4.613	€ 3.200	€ 3.200	€ 4.000	€ 2.400
EU CRAFTER					
NET TURNOVER EXARC	€ 67.260	€ 53.962	€ 68.276	€ 58.449	€ 64.461
BALANCE	€ 9.692	€ 2.337	€ 2.156	-€ 32.781	€ 14.916
ACCUMULATED RESERVES	€ 24.651	€ 34.343	€ 36.680	€ 38.837	€ 6.057
TOTAL RESERVES	€ 34.343	€ 36.680	€ 38.837	€ 6.057	€ 20.973

- The RETOLD project will only be finalised after we submit reporting in 2025 which means **we need to pay about 30% of the costs in advance**. That counts also for the “Putting life” project (the EXARC reserves in 2024 will drop to around 6.000 EUR).
- Since January 2024 we have a new director.
- Due to upcoming costs we decided to reconsider certain annual expenses from 2024 onward: Office Rent, the Financial Statement from a Certified Accountant (considering Certified Auditor instead), and Printed PR products.
- We do not plan at this moment any new (EU) Projects.

THANK YOU