

EXARC.net

SINCE 2001

... Where

Archaeological Open-Air Museums

▪ **Experimental Archaeology** ▪

Ancient Technology ▪ **Interpretation**

Meet ...

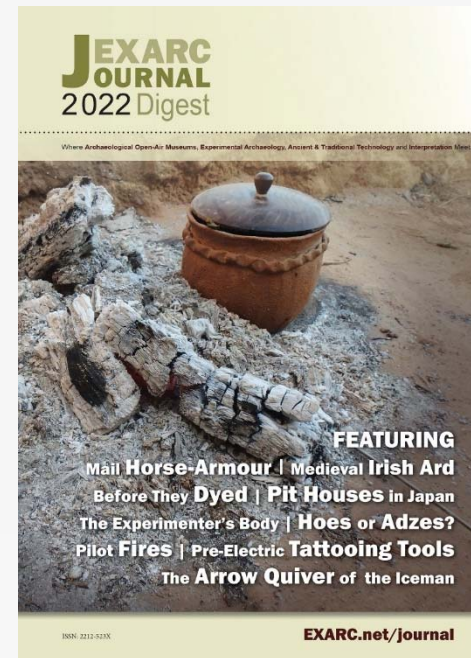
EXARC

2023 Prospects



PR & PUBLICATIONS

- ✓ We will publish one **Printed EXARC Journal Digest**, about 112 pages, and send it to our members around November. That will follow the same design as the previous ones.



PR & PUBLICATIONS

- ✓ **Four online EXARC Journal Issues** are planned: February, June, August and November. We aim to publish about 60 articles. The last two years were more difficult to get articles, we hope 2023 will be a better year.
- ✓ We will continue our efforts to register the EXARC journal in the **Web of Science**.
- ✓ We are planning to **update the website** making it more welcome for new members. Minimizing the content and grouping it with the EXARC vision in mind. This was supposed to happen in 2022.
- ✓ As in the previous years special attention will go the **Event Calendar**
Please check: <https://exarc.net/events>
- ✓ We also reconsider designing a **flyer or brochure** about EXARC and its partners.

PR & PUBLICATIONS

- ✓ We continue our monthly **Podcasts**, 10-11 per year. We have a dedicated group of volunteers for this.
- ✓ We support **RETOLD** partners with their PR products (vlogs, articles, banners – see next slide with “**Documenting Houses**”).
- ✓ We also cooperate with Leiden University in the “**Putting life into Late Neolithic houses**” project, where we help with videos and social media.



DOCUMENTING HOUSES

STEINZEITPARK DITHMARSCHEN

PLAN / EXCAVATION

The Pennigbüttel house was excavated in 1988 and dates to about 3,200 BC, the Neolithic Era. It measures about 11 x 6 metres.

1999: Reconstruction of the Pennigbüttel house

2019: Reconstructed doors at the Pennigbüttel house

2022: We use the house model to demonstrate daily life and farming in the Neolithic 5,000 years ago.

2022: We use the house model to demonstrate daily life and farming in the Neolithic 5,000 years ago.

RETOLD.EU Co-funded by the Creative Europe Programme of the European Union

DOCUMENTING HOUSES

1968: House from Săcel in situ

HOUSE FROM SĂCEL, MARAMUREȘ COUNTY

The house dates from the second half of the 19th century. It was transferred and rebuilt in the ASTRA Museum in 1968. It is part of a potter's house and workshop from Săcel's pottery centre. This is an area renowned for preserving old techniques for pressing clay and achieving pot impermeability, and preserving the old shapes of Daclan pottery.

1968: Reconstruction in the ASTRA Museum of the house from Săcel

PLAN

The plan shows the archaic type of building, without a porch, with three rooms:

- a hall (5,20 x 3,40 m),
- a pantry (5,20 x 1,10 m),
- a living quarters (5,20 x 5,95 m).

The house has one floor.

Drawing of the detail of the beam's joint

2022: The reconstructed potters Workshop from Săcel in the Astra Museum today

RETOLD.EU Co-funded by the Creative Europe Programme of the European Union

DOCUMENTING HOUSES

STIFTUNG STADTMUSEUM BERLIN

HOUSE 14 MUSEUM VILLAGE DÜPPEL

Based on one of the best preserved floor plans excavated at the medieval settlement in Berlin-Zehlendorf. The excavation plan showed a post-construction with split plank walls and a hearth, as discoloration's in the soil. All above ground features did not survive. The house model is therefore just one possible interpretation of reconstructing the evidence found in the ground.

1970's: Building the first archaeological house model (Source: Landesdenkmalamt Berlin)

PLAN

The first reconstruction had to be closed to the public in 1998 as the posts had rotted away and the roof was sagging. It was re-built in 1999 and is still in use today. See the floor plan of the current reconstruction (Source: Stadtmuseum Berlin)

2023: Rendering of 3D-Scan from inside (Source: HTW Berlin)

2019: Rendering of 3D-Scan from the outside (Source: HTW Berlin)

RETOLD.EU Co-funded by the Creative Europe Programme of the European Union

CONFERENCES & MEETINGS

- ✓ January: **European Archaeology Days** Forum in Paris, France
- ✓ March: **RETOLD meeting** at ASTRA Museum, Sibiu, Romania (moved from 2022)
- ✓ May: **Experimental Archaeology Conference #EAC13**, Toruń, Poland (hybrid conference)
- ✓ Autumn: **RETOLD meeting** at Steinzeitpark Dithmarschen, Albersdorf, Germany

COOPERATIONS

EXARC is partner in two cooperation projects:



DOCUMENTATION DIGITISATION SHARING

- ✓ **RETOLD** is the project we are lead partner of, with 5 other members we work on documentation strategies for open-air museums. www.RETOLD.eu



- ✓ **The NWO project (Putting Life into late Neolithic Houses)** where we help with dissemination of the message and to bring more awareness about the projects and its questions. **Leiden University** is coordinating this project. <https://www.puttinglife.com>

COOPERATIONS

- ✓ After a successful 2021 and 2022 awards, we hope to continue with the **EXARC Experimental Archaeology Award**, sponsored by John Kiernan.
- ✓ EXARC has teamed up with the YEAR Centre (UK) and Ukraine based ancient craft expert and EXARC member Yarema Ivantsiv - to create a **Support Ukraine Network (SUN)**.
- ✓ After one year of break we would like to continue with **the Colonial Williamsburg Foundation – EXARC Fellowship**



COOPERATIONS

- ✓ In 2022 we got accepted as new members of the **European Heritage Alliance 3.0**
- ✓ EXARC is an affiliated organisation to **ICOM - the International Council of Museums**
- ✓ We are member of **NEMO - Network of European Museum Associations**
- ✓ **IMTAL EUROPE** – International Museum Theatre Alliance
- ✓ **ALHFAM**, the Association of Living History, Farming and Agriculture Museums
- ✓ **AIMA**, which is the International Association of Agricultural Museums
- ✓ **European Archaeology Days** which are coordinated by **INRAP**



OFFICE & SECRETARIAT

- ✓ Since January 2023 **Magdalena Zielińska** (office manager) and **Roeland Paardekooper** (director) are responsible again for the main tasks including the external projects (RETOLD and “Putting Life”).
- ✓ The group of volunteers remains stable, including two moderators for podcasts, one bookkeeper, one social media coordinator, and one general digital /website support, and several video editors.
- ✓ Next to it we have separate editors and reviewers' team under the supervision of our editor-in-chief **J. Katerina Dvoráková**.

FINANCES

2021-2024

| EXPENDITURE | 2021 | 2022 | 2023 | 2024 | 2025 |
|-----------------------------|-----------------|-----------------|-----------------|-----------------|-------------|
| Staff | € 28.722 | € 21.635 | € 22.690 | € 20.266 | |
| Staff RETOLD | € 11.648 | € 11.052 | € 15.383 | € 13.157 | |
| Conference and Seminars | € 2.985 | € 75 | € 8.215 | € 2.450 | |
| Conference RETOLD | | | | | |
| PR Products | € 3.063 | € 3.344 | € 3.705 | € 3.850 | |
| PR Website | € 163 | € 174 | € 2.350 | € 350 | |
| PR RETOLD | € 403 | € 402 | € 6.201 | € 5.536 | |
| Postage | € 1.907 | € 1.979 | € 2.525 | € 2.625 | |
| Office costs | € 4.458 | € 3.794 | € 4.489 | € 3.620 | |
| Indirect Cost RETOLD | € 855 | € 1.071 | € 1.773 | € 2.400 | |
| Accountant | € 1.858 | € 2.176 | € 350 | € 2.500 | |
| Audit RETOLD | € 160 | € 3.025 | € 2.000 | € 3.815 | |
| Travels / external contacts | € 445 | € 1.187 | € 4.000 | € 4.000 | |
| Travels RETOLD | € 0 | € 828 | € 1.750 | € 9.332 | |
| Other | € 267 | € 390 | € 500 | € 500 | |
| Costs Bank | € 636 | € 492 | € 650 | € 600 | |
| | | | | | |
| TOTAL EXPENDITURE | € 57.568 | € 51.625 | € 76.581 | € 75.002 | |

| INCOME | 2021 | 2022 | 2023 | 2024 | 2025 |
|-----------------------------|-----------------|-----------------|-----------------|------------------|-----------------|
| Donations | € 90 | € 95 | € 100 | € 100 | |
| Contributions | € 34.510 | € 35.630 | € 35.000 | € 36.500 | |
| Adverts | € 600 | € 200 | € 500 | € 500 | |
| Sales | € 109 | € 219 | € 300 | € 300 | |
| Conference and Seminars | € 14.189 | € 1.500 | € 17.175 | € 0 | |
| Income Bank | € 649 | € 618 | € 700 | € 650 | |
| | | | | | |
| | | | | | |
| RETOLD | € 12.500 | € 12.500 | € 12.500 | € 14.208 | € 22.161 |
| Other Grants | € 4.613 | € 3.200 | € 3.200 | € 4.000 | € 2.400 |
| EU CRAFTER | | | | | |
| NET TURNOVER EXARC | € 67.260 | € 53.962 | € 69.475 | € 56.258 | |
| | | | | | |
| BALANCE | € 9.692 | € 2.337 | -€ 7.106 | -€ 18.743 | |
| | | | | | |
| ACCUMULATED RESERVES | € 24.651 | € 34.343 | € 36.680 | € 29.574 | |
| | | | | | |
| TOTAL RESERVES | € 34.343 | € 36.680 | € 29.574 | € 10.831 | |

- ✓ The RETOLD project will only be finalised after we submit reporting in 2024 which means **we need to pay about 30% of the costs in advance**. That counts also for the “Putting life” project (the EXARC reserves in 2024 will drop to around 10.000 EUR).
- ✓ Since January 2021 we have a part time employee to help with all the projects as well as volunteers and Social Media. We also have many volunteers to whom we can offer a volunteer fee from the income of the conferences as well as for the RETOLD project.



THANK YOU